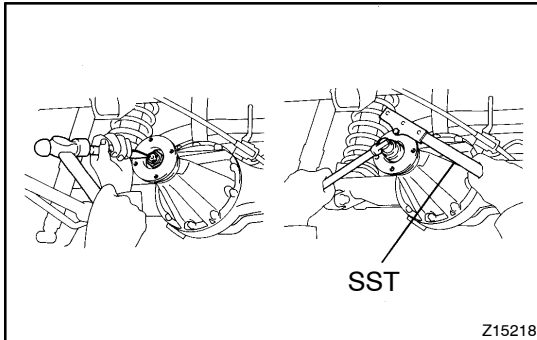


REPLACEMENT

1. DISCONNECT REAR PROPELLER SHAFT

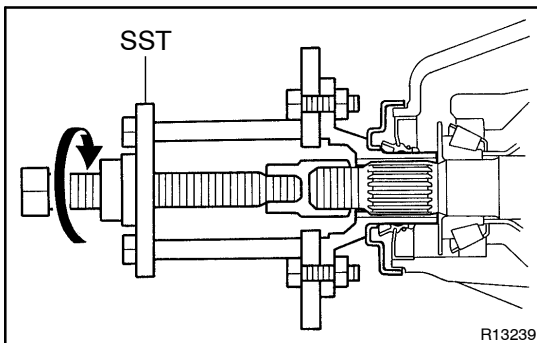
- Place matchmarks on the rear propeller shaft and companion flange.
- Remove the 4 nuts, washers, bolts and disconnect the propeller shaft.
- Support the propeller shaft securely.

2. DRAIN HYPOID GEAR OIL

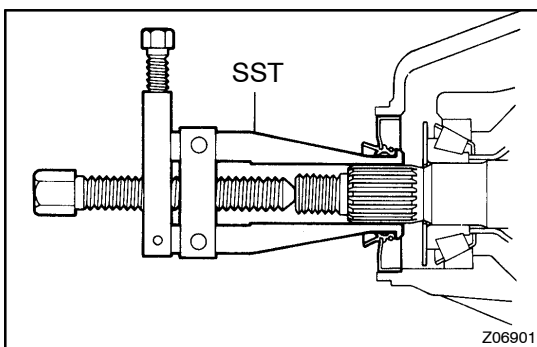


3. REMOVE COMPANION FLANGE

- Using a chisel and hammer, unstake the nut.
- Using SST to hold the flange, remove the nut.
SST 09330-00021

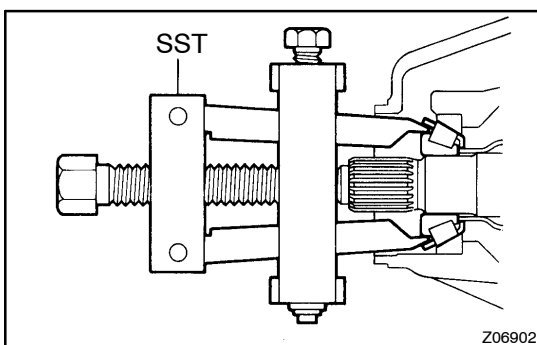


- Using SST, remove the companion flange.
SST 09950-30011 (09951-03010, 09953-03010, 09954-03010, 09955-03030, 09956-03040)



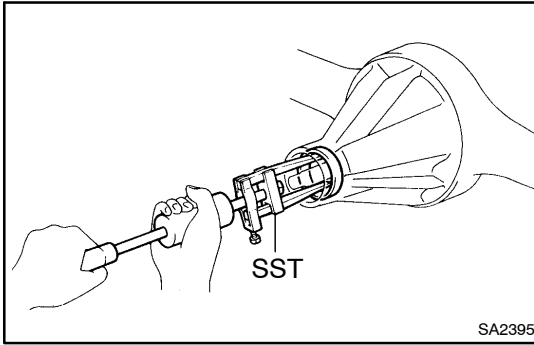
4. REMOVE OIL SEAL AND OIL SLINGER

- Using SST, remove the oil seal.
SST 09308-10010
- Remove the oil slinger.



5. REMOVE FRONT BEARING

- Using SST, remove the front bearing from the drive pinion.
SST 09556-22010



6. REMOVE BEARING OUTER RACE

Using SST, remove the bearing outer race.

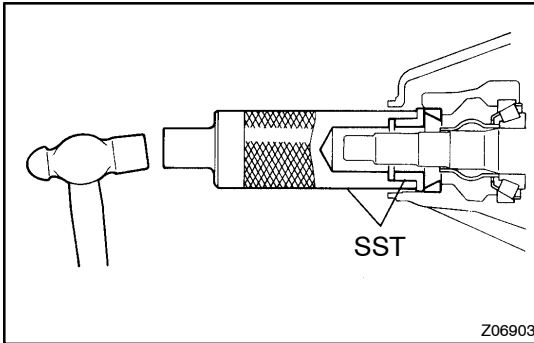
SST 09308-00010

NOTICE:

Do not scratch the taper surface of the outer race.

7. REMOVE BEARING SPACER

8. INSTALL NEW BEARING SPACER



9. INSTALL BEARING OUTER RACE

Using SST and a hammer, install the bearing outer race.

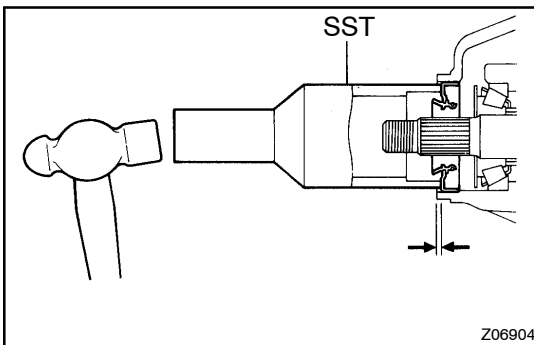
SST 09316-60011 (09316-00011, 09316-00021)

10. INSTALL FRONT BEARING

11. INSTALL OIL SLINGER AND NEW OIL SEAL

(a) Install the oil slinger.

(b) Coat the hypoid gear oil to a new oil seal periphery.

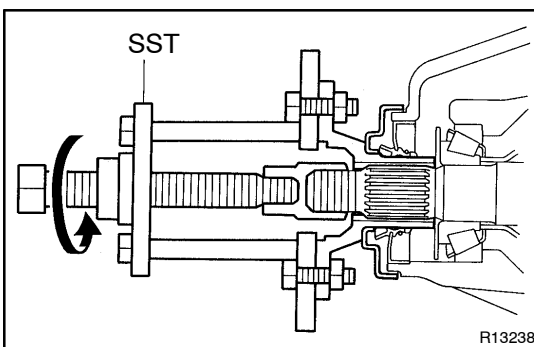


(c) Using SST and a hammer, install a new oil seal.

SST 09214-76011

Oil seal drive in depth: 0.5 mm (0.020 in.)

(d) Coat the MP grease to the oil seal lip.

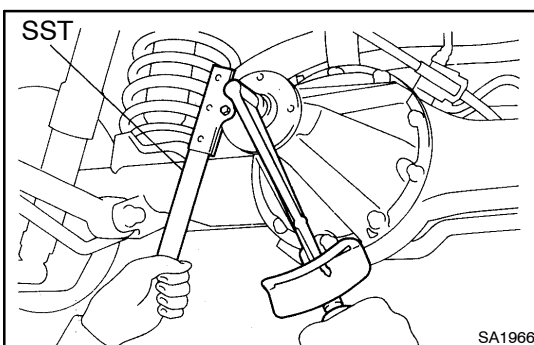


12. INSTALL COMPANION FLANGE

(a) Using SST, install the companion flange on the drive pinion.

SST 09950-30011 (09951-03010, 09953-03010, 09954-03010, 09955-03030, 09956-03040)

(b) Coat the threads of a new nut with hypoid gear oil LSD.



(c) Using SST to hold the frnge, install the nut.

SST 09330-00021

Torque: 245 N·m (2,500 kgf·cm, 181 ft·lbf)

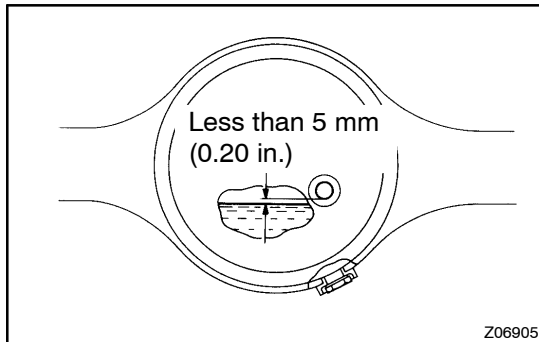
13. ADJUST DRIVE PINION PRELOAD

(See page [SA-104](#), [SA-124](#) or [SA-147](#))

14. STAKE DRIVE PINION NUT**15. CONNECT REAR PROPELLER SHAFT**

- (a) Align the matchmarks on the rear propeller shaft and companion flange.
- (b) Install the 4 bolts, washers and nuts.

Torque: 106 N·m (1,080 kgf·cm, 78 ft·lbf)

**16. FILL DIFFERENTIAL WITH HYPOID GEAR OIL****HINT:**

Set the vehicle height select switch to the "N" mode.

Torque: 49 N·m (500 kgf·cm, 36 ft·lbf)

Oil type:

w/o LSD: Hypoid gear oil API GL-5

w/ LSD: Hypoid gear oil LSD API GL-5

Recommended oil viscosity:

Above -18°C (0°F) SAE 90

Below -18°C (0°F) SAE 80W-90 or 80W

Capacity:

w/ Diff. Lock: 3.20 liters (3.38 US qts, 2.82 Imp.qts)

Others: 3.30 liters (3.49 US qts, 2.90 Imp.qts)